



**Using the Agilent  
U2600A Series USB  
Isolated Digital  
Input/Output Modules  
with MATLAB Software**

**Quick Start Guide**



**Agilent Technologies**

# Notices

© Agilent Technologies, Inc., 2009

No part of this manual may be reproduced in any form or by any means (including electronic storage and retrieval or translation into a foreign language) without prior agreement and written consent from Agilent Technologies, Inc. as governed by United States and international copyright laws.

## Manual Part Number

U2651-90032

## Edition

First Edition, June 30, 2009

Agilent Technologies, Inc.  
5301 Stevens Creek Blvd.  
Santa Clara, CA 95052 USA

## Warranty

**The material contained in this document is provided “as is,” and is subject to being changed, without notice, in future editions. Further, to the maximum extent permitted by applicable law, Agilent disclaims all warranties, either express or implied, with regard to this manual and any information contained herein, including but not limited to the implied warranties of merchantability and fitness for a particular purpose. Agilent shall not be liable for errors or for incidental or consequential damages in connection with the furnishing, use, or performance of this document or of any information contained herein. Should Agilent and the user have a separate written agreement with warranty terms covering the material in this document that conflict with these terms, the warranty terms in the separate agreement shall control.**

## Technology Licenses

The hardware and or software described in this document are furnished under a license and may be used or copied only in accordance with the terms of such license.

## Restricted Rights Legend

U.S. Government Restricted Rights. Software and technical data rights granted to the federal government include only those rights customarily provided to end user customers. Agilent provides this customary commercial license in Software and technical data pursuant to FAR 12.211 (Technical Data) and 12.212 (Computer Software) and, for the Department of Defense, DFARS 252.227-7015 (Technical Data - Commercial Items) and DFARS 227.7202-3 (Rights in Commercial Computer Software or Computer Software Documentation).

## Safety Notices

### CAUTION

A **CAUTION** notice denotes a hazard. It calls attention to an operating procedure, practice, or the like that, if not correctly performed or adhered to, could result in damage to the product or loss of important data. Do not proceed beyond a **CAUTION** notice until the indicated conditions are fully understood and met.

---

### WARNING

A **WARNING** notice denotes a hazard. It calls attention to an operating procedure, practice, or the like that, if not correctly performed or adhered to, could result in personal injury or death. Do not proceed beyond a **WARNING** notice until the indicated conditions are fully understood and met.

---

# Contents

Introduction	2
Install the Software Components and Applications	3
Installing MATLAB and MATLAB's Data Acquisition Toolbox	4
Installing the U2600A Series hardware drivers	4
Installing the Agilent Measurement Manager	5
Installing the U2600A Series IVI-COM drivers	6
Installing the U2600A Series MATLAB DAQ Adaptor	7
Connect the Module	8
Verify Your Module Connection	11
Locate and Add the MATLAB DAQ Adaptor Folder	12
Output example	14
For More Information	15

# 1 Introduction

MATLAB® Data Acquisition Toolbox is a well known data analysis software environment and programming language. MATLAB software enables you to configure, control, and acquire data from the U2600A Series USB isolated digital input/output modules. Once data is in MATLAB, you can analyze and visualize that data using interactive tools and command-line functions for data analysis tasks such as signal processing, statistical analysis, digital filtering, and curve fitting. MATLAB is also used for generating waveforms and developing Test & Measurement applications.

MATLAB supports the U2600A Series USB isolated digital input/output modules using MATLAB, MATLAB's Data Acquisition Toolbox, and a software adaptor. The models in the U2600A Series family that are supported are the U2651A, U2652A, and U2653A.

In order to use these devices with MATLAB, you need to install MATLAB and Agilent software components and applications, connect the USB isolated DIO modules, install the respective drivers, and verify the whole operation with the MATLAB example for U2600A Series hardware. These steps are described in this document.



**Figure 1-1** U2600A Series USB isolated digital input/output modules

## 2 Install the Software Components and Applications

Install the software components and applications in the following order as described in this section of the getting started guide:

- MATLAB and MATLAB's Data Acquisition Toolbox
- the U2600A Series hardware drivers
- the Agilent Measurement Manager (this also installs the Agilent IO Libraries Suite if not already installed)
- the U2600A Series IVI-COM driver
- the U2600A Series MATLAB DAQ adaptor

### Minimum system requirements

Prior to any installation or configuration, please ensure that your PC meets the following minimum system requirements.

**Processor** 1.6 GHz Pentium® IV or higher

**Operating system** Windows® XP Professional or Home Edition (Service Pack 1 or later), or Windows® Vista 32-Bit (Business, Ultimate, Enterprise Home Basic, and Home Premium)

**Browser** Microsoft® Internet Explorer 5.01 or higher

**Available RAM** 512 MB or higher recommended

**Hard-disk space** 1 GB

**Video** Super VGA 800×600 (1024×768 recommended)

**Prerequisites** Agilent IO Libraries Suite 15.1<sup>[1]</sup>, Agilent T&M Toolkit Runtime version 2.1<sup>[2]</sup>, Agilent T&M Toolkit Redistributable Package 2.1 patch<sup>[2]</sup>, Microsoft® .NET Framework version 2.0<sup>[2]</sup>

<sup>[1]</sup> Available on the Agilent Automation-Ready CD-ROM

<sup>[2]</sup> Bundled with the Agilent Measurement Manager software application installer

Follow the instructions below to install the software components:

### Installing MATLAB and MATLAB's Data Acquisition Toolbox

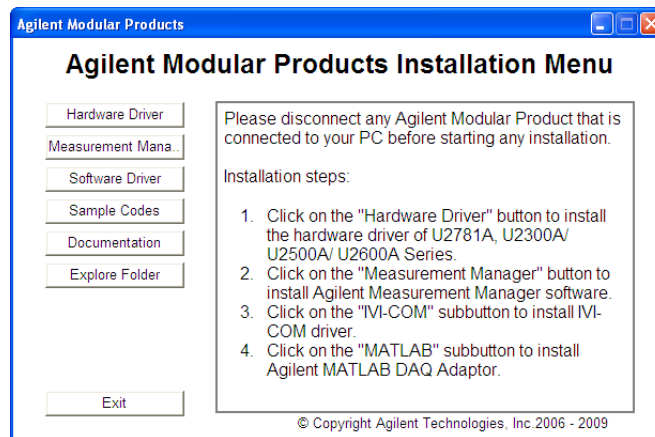
- 1 You can install the MATLAB software directly from the MATLAB installation DVD or from the MathWorks web site. (A MathWorks account is required.) If you do not already have MATLAB and MATLAB's Data Acquisition Toolbox, you can request a trial at: <http://www.mathworks.com/agilent/daq/tryit.html>.
- 2 Follow the on-screen prompts to install MATLAB and this toolbox.

### Installing the U2600A Series hardware drivers

#### NOTE

Please ensure that there are no instruments connected to the PC when installing the driver.

- 1 Verify that your PC meets the minimum system requirements as stated in “[Minimum system requirements](#)” on page 3.
- 2 Insert the *Agilent USB Modular Products Product Reference CD-ROM*. The application automatically loads the “Agilent Modular Products Installation Menu” as shown.



- 3 Click **Hardware Driver** to begin the installation. Click **Next** to proceed. Follow the instructions on the screen to proceed with the installation.

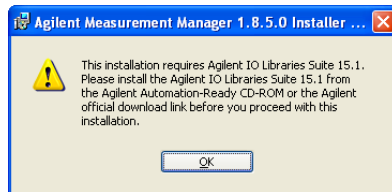
- 4 Click **Install** to begin the installation.
- 5 Click **Finish** when the installation has completed.

### Installing the Agilent Measurement Manager

#### NOTE

Ensure that you have completed the steps for “[Installing the U2600A Series hardware drivers](#)” on page 4 before you proceed.

- 1 Click **Measurement Manager** to begin the installation. Click **Next** to proceed.
- 2 Click **Install** to begin the installation. Follow the instructions on the screen to proceed with the installation.
- 3 If you do not have the Agilent IO Libraries Suite pre-installed, a dialog box will appear to remind you that the Agilent IO Libraries Suite is required to be installed prior to the installation the Agilent Measurement Manager.



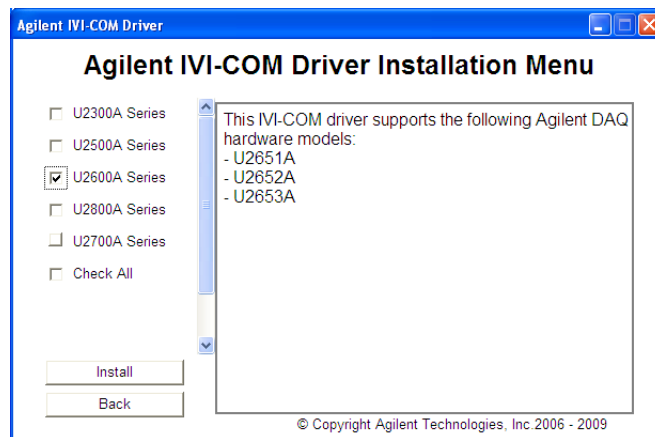
- 4 Click **OK** to exit the Agilent Measurement Manager installation. Install the Agilent IO Libraries Suite from the Agilent Automation Ready CD-ROM or from the Agilent official download link: <http://www.agilent.com/find/iolib>
- 5 Once the Agilent IO Libraries Suite installation has completed, repeat [step 1](#) to install the Agilent Measurement Manager.
- 6 If you do not have any of the other prerequisites installed, the InstallShield Wizard software prerequisite will appear. Click **OK** to begin the installation of the listed missing prerequisites. The installation of the Agilent Measurement Manager software will proceed as normal.
- 7 Click **Finish** when the installation has completed.

## Installing the U2600A Series IVI-COM drivers

### NOTE

- Ensure that you have completed the steps for “Installing the U2600A Series hardware drivers” on page 4 before you proceed.
- The IVI Shared Components must also be installed prior to installing the IVI-COM driver. Find the IVI Shared Components at the IVI web site here: <http://www.ivifoundation.org>.
- If needed, the IVI-COM driver may also be downloaded from <http://www.agilent.com/find/ivi-com>.

- 1 Click **Software Driver > IVI-COM** to begin the installation.



- 2 Select the U2600A Series check box. Click **Install** to begin the installation. Follow the instructions on the screen to proceed with the installation.
- 3 Click **Finish** when the installation has completed.

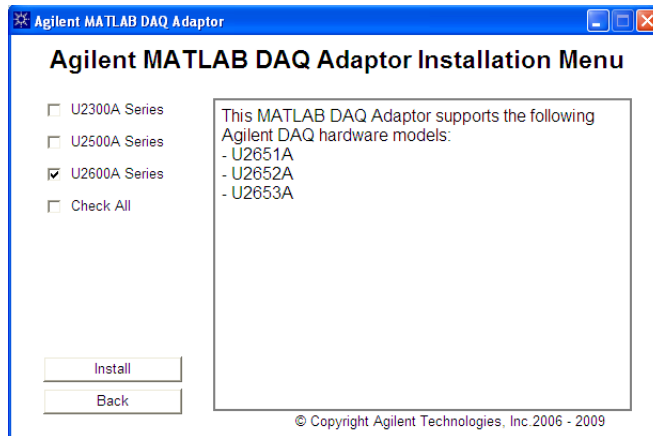


## Installing the U2600A Series MATLAB DAQ Adaptor

### NOTE

If needed, the U2600A Series MATLAB DAQ Adaptor may also be downloaded from [http://www.agilent.com/find/matlab\\_u2600a](http://www.agilent.com/find/matlab_u2600a).

- 1 Click **Software Driver > MATLAB** to begin the installation.



- 2 Select the U2600A Series check box. Click **Install** to begin the installation. Follow the instructions on the screen to proceed with the installation.
- 3 Click **Finish** when the installation has completed.

### 3 Connect the Module

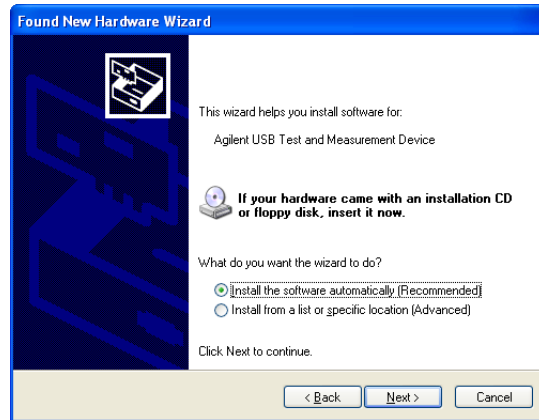
#### NOTE

Ensure that all the required software components and applications are installed before proceeding. See “[Install the Software Components and Applications](#)” on page 3 for more information.

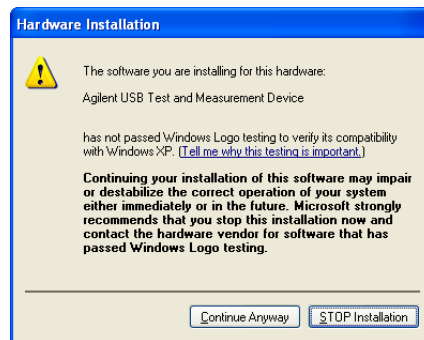
- 1 After all the installations have completed, connect the power supply to your instrument.
- 2 Connect the U2600A Series to any USB port on your PC with the bundled USB cable.
- 3 Your PC will automatically detect the connected unit and the Found New Hardware Wizard window will appear. Select Yes, this time only and click **N**ext to proceed.



- 4 Select Install the software automatically (Recommended) and click **Next**.



- 5 A warning message will appear on the Hardware Installation window. Click **Continue Anyway** to proceed with the installation of the USB isolated DIO modules.

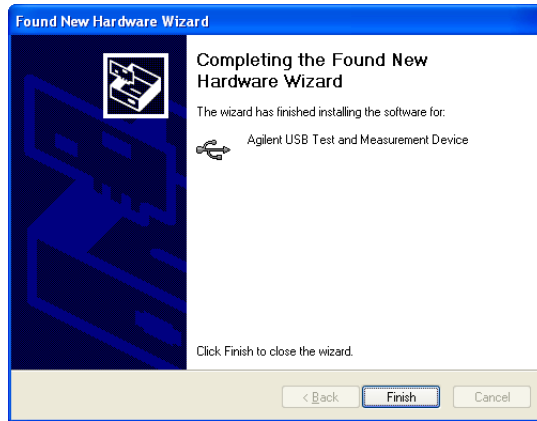


## NOTE

If you do not wish to receive similar warning messages in the future, follow the instructions below.

- 1 Go to **Start > Control Panel** and double-click **System**.
- 2 Select the **Hardware** tab and click **Driver Signing** on the Drivers panel.
- 3 The **Driver Signing Options** dialog box will appear.
- 4 Select **Ignore** to disable the warning message.

6 Click **Finish** to complete the installation.



If you have more than one type of USB instrument connected, you will need to go through the driver installation procedures again for each USB instrument connected.

## 4 Verify Your Module Connection

The Agilent Connection Expert is one of the utilities of the Agilent IO Libraries Suite. The Connection Expert configures the connected instruments and enables communication. It is able to automatically detect the U2600A Series USB isolated digital input/output modules plugged into the PC.

- 1 Go to **Start > All Programs > Agilent IO Libraries Suite > Agilent Connection Expert** to launch the Connection Expert.
- 2 The detected USB isolated DIO modules will be visible on the Instrument I/O on this PC explorer pane. Right-click on the USB isolated DIO modules instrument on the explorer pane.
- 3 A context menu will appear. Select **Send Commands To This Instrument**.
- 4 The Agilent Interactive IO dialog box will appear. Click **Send & Read** to send the \*IDN? default command. The instrument response should appear in the Instrument Session History panel.

### NOTE

Repeat this verification for all applicable modules connected to your PC.

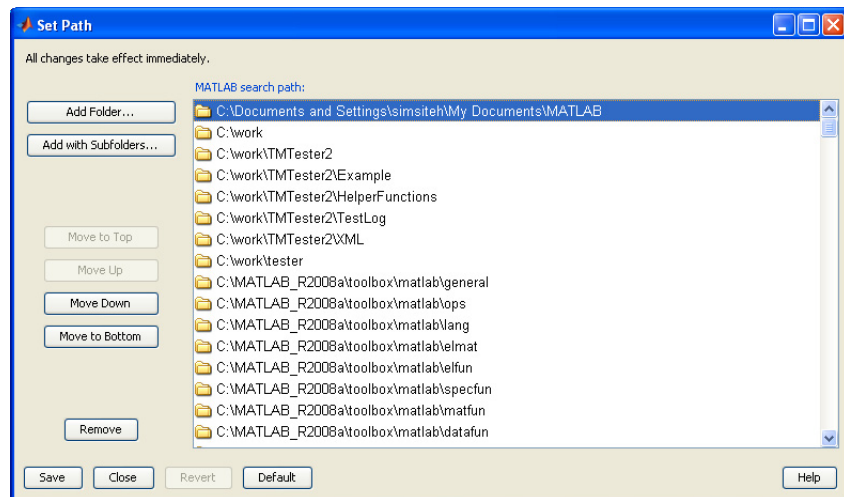
---

## 5 Locate and Add the MATLAB DAQ Adaptor Folder

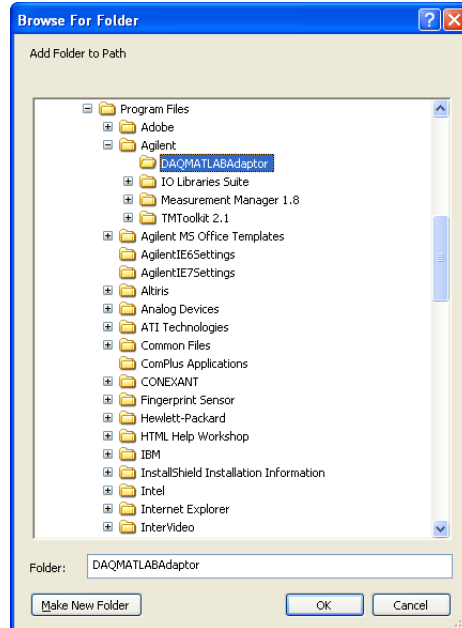
Follow the instructions below to locate and add the folder in which the MATLAB DAQ adaptor has been installed. The folder contains a file in the form `AgilentU2600.dll`, which works for all U2600A Series hardware.

### Launch MATLAB.

- 1 Click **File > Set Path**. The Set Path window appears as shown.



- 2 Click **Add Folder**. The Browse For Folder window appears as shown. Use this window to locate the AgilentU2600.dll file. The default MATLAB DAQ Adaptor directory is C:\Program Files\Agilent\DAQMATLABAdaptor.



- 3 Click **OK**. The folder is then added. Click **Save** and then click **Close**.
- 4 Open the MATLAB example program. Change the AgilentU2600 name to the name of your adaptor by editing the program. Then run the example program. Your output should look similar to the example shown below.
- 5 Once you add the .dll file to the path in the steps above, you need to register it. (This is a one time step.) You can register the .dll in the MATLAB Command Window: `daqregister('C:\Program Files\Agilent\DAQMATLABAdaptor\U2600 Series\AgilentU2600.dll')`
- 6 Execute the MATLAB example program called “daqstartup” in the MATLAB Command Window to confirm that everything is installed correctly. (You can download this example application at [http://www.agilent.com/find/matlab\\_u2600A](http://www.agilent.com/find/matlab_u2600A).) Your output should look similar to the results shown below:

## Output example

```
>>daqstartup

ans=

AdaptorDllName: 'C:\Program Files\Agilent\DAQMATLABAdaptor\
AgilentU2600.dll'

AdaptordllVersion: '1,2,0,0'

AdaptorName: 'agilentu2600'

BoardNames: {U2651A}

InstalledBoardIds: {'0'}

ObjectConstructorName: {1x3 cell}

ans=

AdaptorName: 'agilentu2600'

Bits: 16

Coupling: {'DC Coupled'}

DeviceName: 'U2651A'

DifferentialIDs: [1x32 double]

Gains: [1 2 4 8]

ID: '0'

InputRanges: [8x2 double]

MaxSampleRate: 250000

MinSampleRate: 3

NativeDataType: 'int16'

Polarity: {'Unipolar' 'Bipolar'}

SampleType: 'Scanning'

SingleEndedIDs: [1x64 double]

SubsystemType: 'AnalogInput'

TotalChannels: 64

VendorDriverDescription: 'IVI Driver for AgilentU265x family of USB DAQ
modules.'

VendorDriverVersion: '2.0.12.1'
```



## 6 For More Information

- 1 Request a trial of MATLAB and MATLAB's Data Acquisition Toolbox:  
<http://www.mathworks.com/agilent/daq/tryit.html>
- 2 Learn more about using MATLAB software with the U2600A Series devices:  
<http://www.mathworks.com/agilent/daq/overview>
- 3 Learn how to use the Data Acquisition Toolbox to create MATLAB scripts by reading the user documentation for the Data Acquisition Toolbox:  
<http://www.mathworks.com/access/helpdesk/help/toolbox/daq/index.html>
- 4 Learn how to use MATLAB software with other Agilent hardware:  
<http://www.mathworks.com/agilent/overview>

MATLAB® Data Acquisition Toolbox is a registered trademark of The MathWorks, Inc.



**Contact us**

To obtain service, warranty or technical assistance, contact us at the following phone or fax numbers:

United States:

(tel) 800 829 4444 (fax) 800 829 4433

Canada:

(tel) 877 894 4414 (fax) 800 746 4866

China:

(tel) 800 810 0189 (fax) 800 820 2816

Europe:

(tel) 31 20 547 2111

Japan:

(tel) (81) 426 56 7832 (fax) (81) 426 56 7840

Korea:

(tel) (080) 769 0800 (fax) (080) 769 0900

Latin America:

(tel) (305) 269 7500

Taiwan:

(tel) 0800 047 866 (fax) 0800 286 331

Other Asia Pacific Countries:

(tel) (65) 6375 8100 (fax) (65) 6755 0042

Or visit Agilent World Wide Web at:

[www.agilent.com/find/assist](http://www.agilent.com/find/assist)

Product specifications and descriptions in this document are subject to change without notice. Always refer to Agilent Web site for the latest revision.